



GREENVILLE-PITT COUNTY  
CONVENTION & VISITORS BUREAU

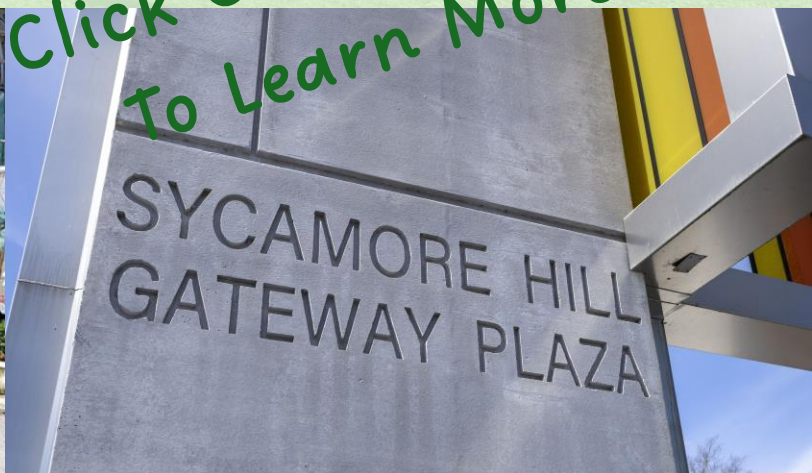
*Find yourself in good company®*

**GREENVILLE**  
*Play* NC • SPORTS

# Things to do in Greenville-Pitt County

*Adult Edition!*  
*Click On Each Page*  
*To Learn More*

\*All prices are approximate and subject to change



To request complimentary assistance from our office for  
your visiting group please contact Joshua Meeks,  
252-329-4223 or [JMeeks@GreenvilleNC.gov](mailto:JMeeks@GreenvilleNC.gov)  
[VisitGreenvilleNC.com](http://VisitGreenvilleNC.com)



# Things To Do!

## Food And Drink

Pitt County Brew And Cue

Simply Natural Creamery

Wine, Distilleries & Bottle Shops

## Outdoor Opportunities And More

Greenville Greenway

Greenville Town Common

River Park North

Strawberries on 903

Wildwood Park

Bowlero East Carolina

Greenville United Football Club

## Art

Colours Splatter Studio

Emerge Gallery & Art Center

Greenville Museum of Art

Museums & History

Painted Peacock

Wine & Design

## Shopping

Antiques

Downtown Shopping

## Self Guided Tours

African American Cultural Trail

Hidden Treasures on ECU's Campus

To request complimentary assistance from our office for  
your visiting group please contact Joshua Meeks,  
252-329-4223 or [JMeeks@GreenvilleNC.gov](mailto:JMeeks@GreenvilleNC.gov)  
[VisitGreenvilleNC.com](http://VisitGreenvilleNC.com)



# Pitt County Brew & 'Cue Trail



SCAN ME

Pick up your official Pitt County Brew & 'Cue Trail "PassPork" at any of these locations below, or at our Visitors Center located at 417 Cotanche Street, Suite 100 in Greenville. Once you have your PassPork start hitting every stop on the trail enjoying all the best brew and 'cue Pitt County has to offer and collecting official stamps from each establishment until you fill up your book. Once you complete your PassPork (either BBQ Joints, Breweries, or both!) return it to the Visitors Center for our last stamp and reclaim your prize- either a Pitt County Brew & 'Cue Trail t-shirt or pint glass, and to get your picture taken for the Brew & 'Cue Wall of Fame! Be sure to use #visitgreenvillenc when sharing photos and videos on social media so we can follow your fun and share your experience on our official Visit Greenville, NC social accounts!

This self-guided, self-paced trail combines Pitt County's legendary Eastern NC barbecue joints and our award-winning craft breweries into a fun experience (or challenge!) for residents and visitors alike!





# Simply Natural Creamery



SCAN ME



Take a Tour of our Farm!

## **Weekday Tours**

By reservation **ONLY** at  
10am, 12pm, and 2pm

Approximately 1 hour and 30 minutes long.

## **Weekend Tours**

Every hour on the hour

Saturdays 11am to 5pm

Sundays 2pm to 5pm

First come, first served.

Approximately 30 minutes long.

**Thank you!**

If you can not make it to the farm or simply want good ice cream and other treats, visit the Simple Natural Creamery location here in Greenville.





# Wine, Distilleries & Bottle Shops



SCAN ME





# Greenville Greenway



SCAN ME

Greenville's Greenways are an inner-city oasis spanning over 9 miles throughout the city. This is the perfect location to walk, run, or bike along the Tar River, around ECU Campus, and through many of Greenville's parks. The Greenway is also a great place for your furry friends, with miles of paved trail to explore and an Off-Leash Dog Park about half a mile from Town Common. Find other hidden gems like the FROGGS Shade Garden, a dock to enjoy the view, picnic tables, and more throughout the Greenway!

\* If wheelchair bound or living with a disability, find handicap parking and trail access at Green Springs Park and Town Common.





# Greenville Town Common



SCAN ME

Located in the heart of Downtown Greenville, NC, the Town Common is a great place to spend an afternoon with family. With a playground, boat access, walking trails, and wide-open green spaces, the Town Common offers something for everyone—whether you're looking to relax or enjoy some energetic fun.

## Amenities at The Greenville Town Common:

Greenway  
Amphitheater  
Boat Ramp  
Fishing  
Fishing Piers

Picnic Shelter  
Picnic Tables  
Playground  
Public Rest Rooms  
Walking Trails





# River Park North



SCAN ME

River Park North is a 324-acre nature park offering a wide range of activities including boating, camping, fishing, hiking, picnicking, and a nature center. It's a great destination for school, scout, church, and other groups, who are encouraged to visit and explore the outdoors.  
Location: 1000 Mumford Road, Greenville, NC.

## Amenities

*Some amenities require fees and advanced reservations. For more information, please call 252.329.4560.*

**Fishing** – 5 ponds, 2 piers, and rental fishing boats

**Pedal Boating**

**Camping** – Group camping area, 3 primitive campsites, and 2 drive-to sites

**Wildlife Observation Platform**

**Hiking Trails**

**Fossil Pit**

**Picnic Shelters with Grills** – 2 shelters, with a total of 40 picnic tables





# strawberries on 903



SCAN ME

## Pick-Your-Own Strawberry Season

Strawberry season is the highlight of spring, typically beginning in mid-April and running through May. At Strawberries on 903, we offer a genuine family-friendly experience with three acres of clean, well-maintained fields located conveniently near parking.

We provide containers for your berries, and you're welcome to pick as much as you like, for as long as you like! We also offer special baskets for children, making this a perfect outing for the whole family.

Strawberry picking is a wonderful opportunity to teach kids where food comes from and to rediscover the incredible flavor of fresh-picked produce.

So gather your family, bring along some friends—or enjoy a peaceful solo visit—and head out to our farm in Winterville for some old-fashioned strawberry picking fun!



To request complimentary assistance from our office for your visiting group please contact Joshua Meeks, 252-329-4223 or [JMeeks@GreenvilleNC.gov](mailto:JMeeks@GreenvilleNC.gov)  
[VisitGreenvilleNC.com](http://VisitGreenvilleNC.com)



# Wildwood Park

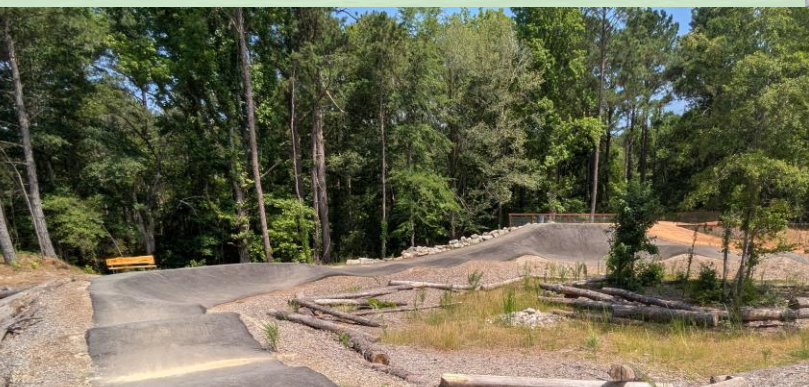


SCAN ME



## Amenities:

- Greenway
- Biking Trails
- Boat Ramp
- Fishing
- Fishing Piers
- Picnic Shelter
- Picnic Tables
- Playground
- Public Rest Rooms
- Walking Trails





# Bowlero East Carolina



SCAN ME

## Night Strike: Sunday and Weekday Fun

1. **Unlimited Bowling:** With Night Strike, you'll enjoy unlimited bowling for a flat rate. No need to keep an eye on the clock – you can bowl as long as you want.
2. **Great Value:** Night Strike offers an unbeatable price, making it the perfect choice for friends and families looking for affordable entertainment.
3. **Late-Night Excitement:** Extend your weekend vibes with Night Strike. It's the ideal way to unwind after a long day at work.
4. **Special Offers:** Keep an eye out for special deals and discounts that often accompany Night Strike. You might just score some extra perks like discounted food and drinks.



## After Party: Weekend Party

1. **Kickstart the Weekend:** Start your weekend with a bang! After Party is the perfect way to transition from the work week to the weekend.
2. **Unlimited Bowling:** Just like Night Strike, After Party offers unlimited bowling. Challenge your friends to endless games and let the good times roll.
3. **Perfect Night Out:** Experience the thrill of the perfect night out at After Party. The lights, music, and the company of friends create an electrifying atmosphere you won't find anywhere else.
4. **Food and Drinks:** Treat yourself to epic snacks and refreshing drinks all night long. It's a great way to refuel and keep the fun going.

# Greenville United Football Club



SCAN ME

Home Game Vs Charlottetowne May 17<sup>th</sup>, 6pm



To request complimentary assistance from our office for  
your visiting group please contact Joshua Meeks,  
252-329-4223 or [JMeeks@GreenvilleNC.gov](mailto:JMeeks@GreenvilleNC.gov)  
[VisitGreenvilleNC.com](http://VisitGreenvilleNC.com)





# Colours Splatter Studio



SCAN ME



Discover the Splatter Experience - a one-of-a-kind painting technique that brings vibrant colors to life, creating personalized art pieces that speak to your individuality. Elevate your space with these unique creations today!





# Emerge Gallery & Art Center



SCAN ME

The Pitt County Arts Council at Emerge is a non-profit arts organization dedicated to enhancing the quality of life in Pitt County by promoting artists and arts organizations, educating through the arts, and making the arts accessible to the entire community.

The Pitt County Arts Council at Emerge is the local arts council for Pitt County. The PCAC at Emerge is located in a facility with over 8000 square feet, at 404 S. Evans Street in Uptown Greenville. There are three main gallery spaces, including two that rotate monthly with new exhibitions. There are also three smaller gallery spaces around the art center for community and student exhibitions to be show

Emerge has a full art center including a pottery studio with 13 potter's wheels, a metalsmithing studio, photography studio, and two general classrooms. Emerge offers weekly adult and youth classes, monthly workshops, and special events, as well as a 10 week summer program.





# Greenville Museum of Art

## Hours of Operation

Sunday: CLOSED

Monday: CLOSED

Tuesday: 10:00am - 4:30pm

Wednesday: 10:00am - 4:30pm

Thursday: 10:00am - 4:30pm

Friday: 10:00am - 4:30pm

Saturday: 10:00am - 4:30pm

Admission: Admission to the Greenville Museum of Art is **FREE**, thanks to the generosity of our members, sponsors, and donors.



SCAN ME





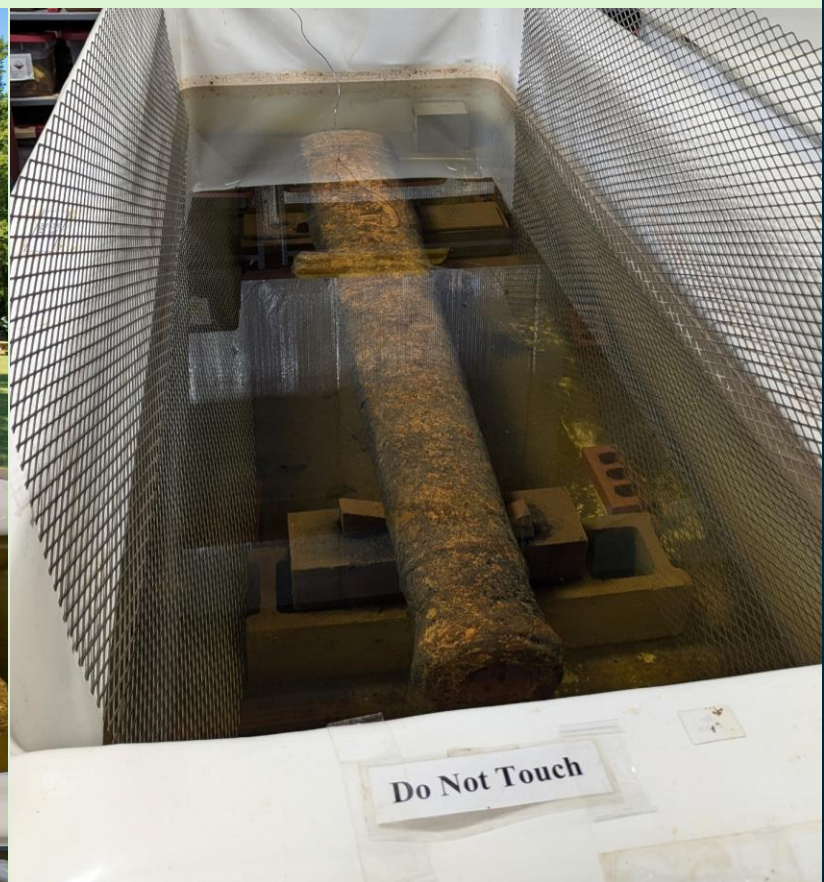
# Museums & History



SCAN ME

Greenville and Pitt County have over 300 years of documented history going back to before the American Revolution! Over 30 homes and buildings on the National Register of Historic Places, 14 markers on the NC Highway Historical Marker Program, 6 sites on the Civil War Trails of America, and several museums that share the history of our area from its settlement in the early 1700s through today.

Plan a trip to one of our history museums to really step back in time! Discover the history and science behind the infamous Eastern NC pirate Blackbeard and the treasures of his flagship that is currently being excavated in Beaufort Inlet and preserved and at the Queen Anne's Revenge Conservation Laboratory at East Carolina University's West Research Campus. Learn about farm life from 1840-1940 at the Eastern Carolina Village & Farm Museum in Greenville, delve into the history of the western part of Pitt County at the May Museum in Farmville, and discover Pitt County's role in the first state-wide exploration of North Carolina by English colonists and how that trip ended not far from the Grifton Museum & Indian Village, which hosts an annual John Lawson Legacy Days festival every year there on the banks of the historic Contentnea Creek.





# Painted Peacock



SCAN ME

The Painted Peacock welcomes guests of all talent levels, whether you are an avid painter or an inspired beginner. From birthday parties to bridal showers, we have something for everyone. Unveil your creative side with a piece of art that you will cherish forever.

The Painted Peacock is a creative solution for your next party. No matter the occasion, allow us to entertain your family and friends.





# Wine & Design



SCAN ME

## Paint Without Parameters

Think you've experienced paint and sip before? Think again! From fandom trivia nights (prizes & painting included!), glowing blacklight pARTies, turning your pet into a masterpiece with custom pet portraits (because they're basically royalty anyway!), crafting keepsakes with ceramics, to making a splash in a splatter room—we're always adding new, surprise experiences that will keep you coming back over and over!





# Antiques



SCAN ME

Love the thrill of the hunt for unique treasures? Find all kinds of one-of-kind items at local Greenville-Pitt County antique shops and flea markets! Everything from furniture, jewelry, vinyl records, clothing, toys, and more from by-gone eras are all waiting to be discovered and appreciated all over again. Hop from shop to shop filled to the brim with nostalgia and memories!





# Downtown Shopping



SCAN ME

## Boutiques

[Bella Maddison Boutique](#)

[Meg's Boutique NC](#)

[Park's Jewels Boutique](#)

## Other Stores

[Aji](#)

[Farmers & Makers Market](#)

[Greenville Bicycle Company](#)

[University Book Exchange](#)





# African American Cultural Trail



SCAN ME

The African American Cultural Trail of Greenville-Pitt County was created to celebrate the rich history and recognize the many contributions that African Americans made to the growth and development of our city and county. The trail allows you to experience the lives, stories, and history of our area's early black educators, medical professionals, cultural leaders, and residents.

Take the journey and learn about the vibrant Downtown neighborhood before urban renewal, see the site where the first colored hospital stood, walk in the steps of the those who enjoyed the entertainment and social center of the African American community called "The Block" and enjoy the beauty of the Sycamore Hill Gateway Plaza where a group of 22 faithful individuals established Sycamore Hill Missionary Baptist Church in 1865 after holding meetings in Sister Ruth Armond's home on North Greene Street since 1860.



Find yourself in good company®

To request complimentary assistance from our office for your visiting group please contact Joshua Meeks, 252-329-4223 or [JMeeks@GreenvilleNC.gov](mailto:JMeeks@GreenvilleNC.gov)  
[VisitGreenvilleNC.com](http://VisitGreenvilleNC.com)





# Hidden Treasures on ECU's Campus!



SCAN ME

## PeeDee's Hidden Coin Challenge

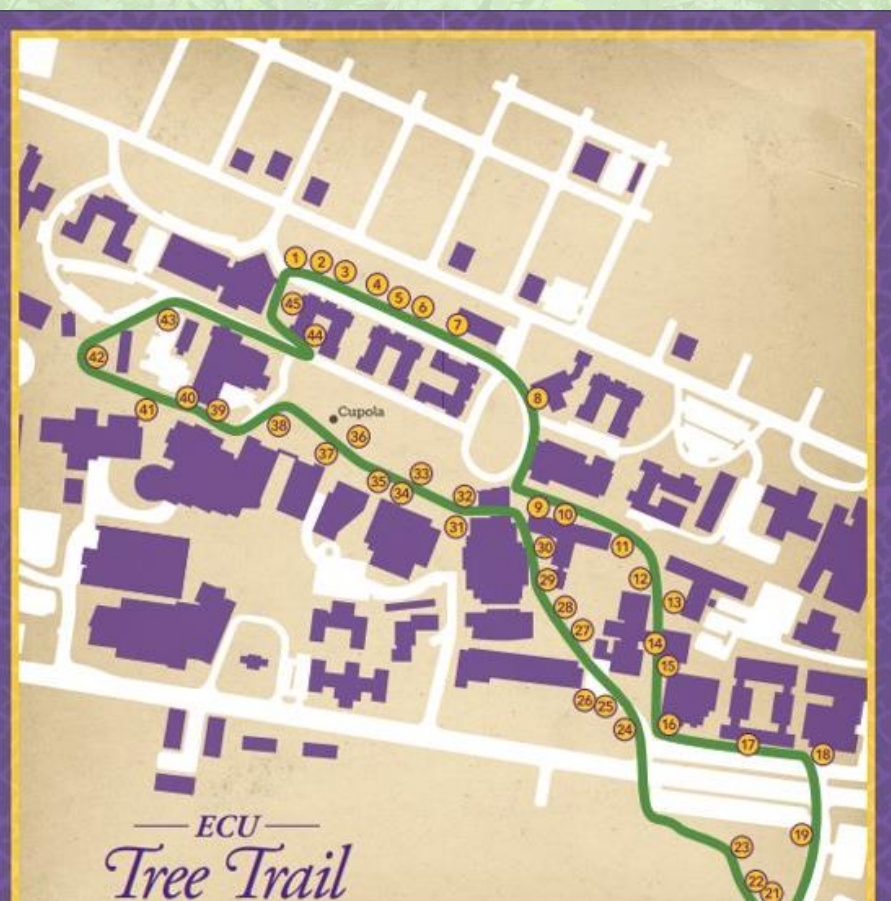
Feeling adventurous? We've got a campus challenge just for you! When you step inside the Main Campus Student Center, don't forget to look down. Hidden in plain sight on the floor are four tiny coins, each featuring a unique version of PeeDee the Pirate.

Can you find them all? Take on the challenge and tag us @eastcarolinauniv on social media when you do!

## Walk Through ECU's Living History on the Tree Trail

Are you like the Lorax and "speak for the trees"? Then you'll love ECU's Tree Trail. A 1.5-mile circular route that showcases 45 different tree species across campus.

It's not just a peaceful way to explore ECU—it's also an interactive outdoor classroom, where you can learn about each tree's history and ecological importance using a printed brochure.



To request complimentary assistance from our office for your visiting group please contact Joshua Meeks, 252-329-4223 or [JMeeks@GreenvilleNC.gov](mailto:JMeeks@GreenvilleNC.gov)  
[VisitGreenvilleNC.com](http://VisitGreenvilleNC.com)



# Contact Us!



SCAN ME



Rachel Whitten, CMP  
Vice President of Sales & Services  
[Rachel@VisitGreenvilleNC.com](mailto:Rachel@VisitGreenvilleNC.com)  
(252) 329-4244



Ce'Nedra Dillard, STS, SDLT  
Director of Sports Development  
[CDillard@GreenvilleNC.gov](mailto:CDillard@GreenvilleNC.gov)  
(252) 329-4232



Joshua Meeks, MS-STH  
Sales & Services Assistant  
[JMeeks@GreenvilleNC.gov](mailto:JMeeks@GreenvilleNC.gov)  
(252) 329-4223



GREENVILLE-PITT COUNTY  
CONVENTION & VISITORS BUREAU

*Find yourself in good company®*

